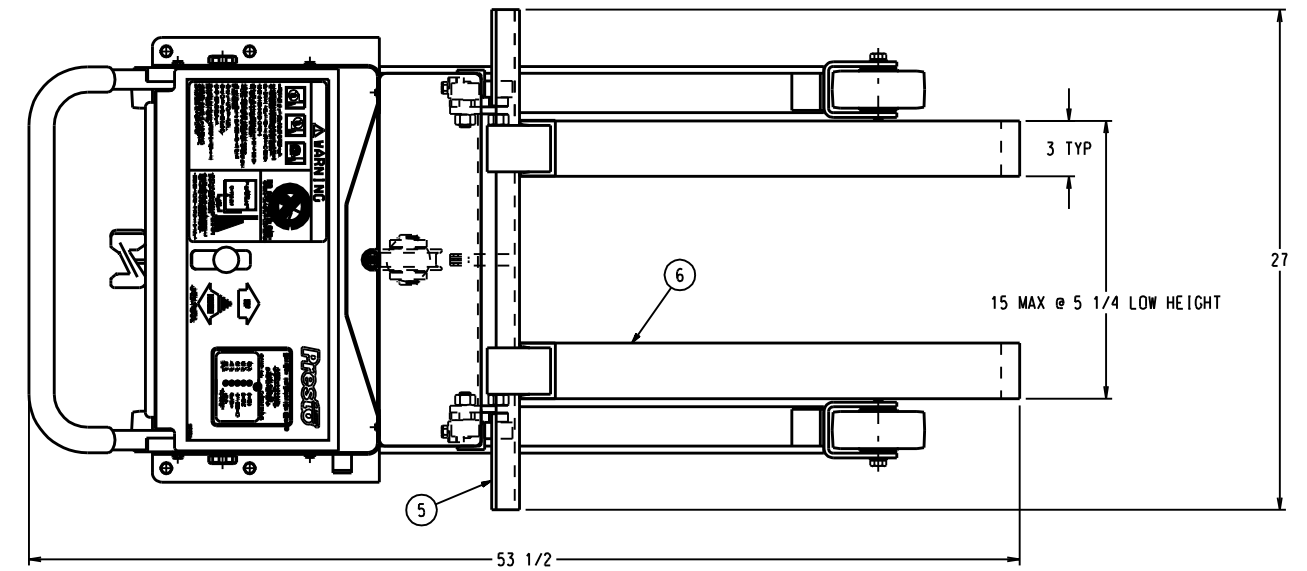
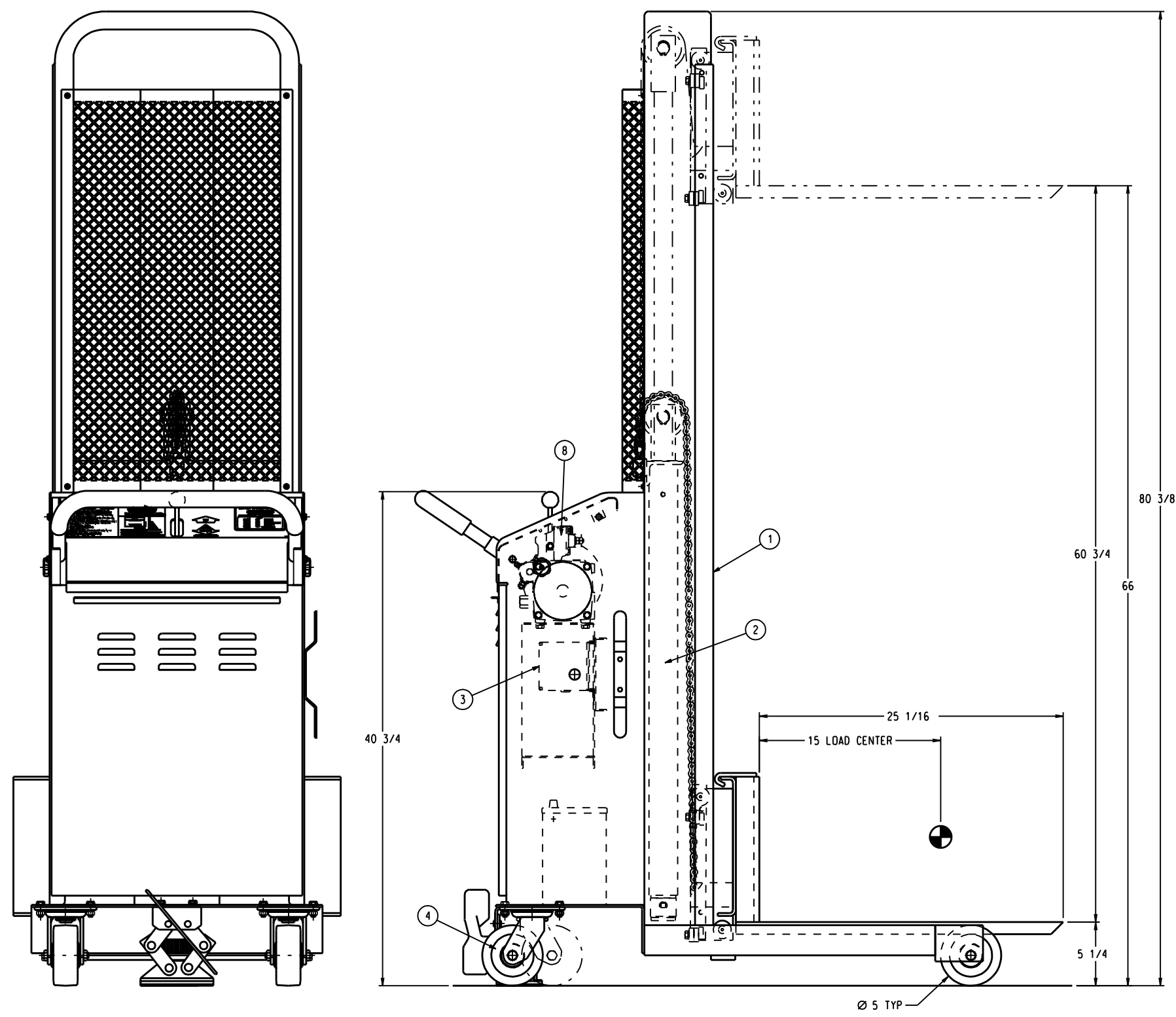


REV	DESCRIPTION	DATE	APPROVED	MF NO.
A	ITEM 8 WAS 60011224	05-19-06	SMS	P1019



FORKS CAN BE SPREAD WIDER UP TO 26 O.D. @ A LOW HEIGHT OF 6 1/4"

GENERAL DESCRIPTION
 MODEL: B666
 CAPACITY: 1000 LBS. @ 15" L.C.
 RISE: 60 3/4 IN @ 12 SEC
 POWER: 12VDC
 CONTROLS: HANDVALVE
 FINISH: PRESTO ORANGE & BLACK MACHINERY ENAMEL

ITEM	QTY	DESCRIPTION	PART NO.
10		HY PLUMBING SCHEMATIC	A 80001162
9		EL WIRING DIAG 12 DC BTRY	B 80000424
8	1.0	EA HY PU MONARC	C 80002938
7		REF LD KIT LOC DIAG STACKER	C 80001114
6	2.0	EA SA FORK WELDMENT C119-1 27" W/ BEVEL	B 80001103
5	1.0	EA SA BACKPLATE ASSY 1000# B600 SLOT	C 80001141
4	1.0	EA ACP PORT KIT WP E/B B600	C 80000856
3	1.0	EA EL ARR B600-1500	C 80000855
2	1.0	EA HY ARR I B666 12VDC	D 80001122
1	1.0	EA SA FRAME AND CABINET WELDMENT B666	D 80001120

3RD ANGLE PROJECTION
 UNLESS OTHERWISE SPECIFIED, DIM ARE IN INCHES
 USE OF PROPRIETARY INFORMATION LIMITED TO WRITTEN AGREEMENT

FRACTIONS ±1/8
 .XXX ±.005
 .XX ±.01
 ANGLES ±.5°
 DIM ARE IN INCHES
 UNLESS OTHERWISE SPECIFIED, DIM ARE IN INCHES
 USE OF PROPRIETARY INFORMATION LIMITED TO WRITTEN AGREEMENT

PRESTO LIFTS WORLDWIDE MATERIAL HANDLING AND ERGONOMIC SOLUTIONS
 21 Park Street, Attleboro, MA 02703

REFERENCE: 5001152
 SCALE: 3/16
 MODEL: B666
 TITLE: TL STKR B666 STANDARD
 D-DRAWING NUMBER: B666
 DATE: 5-16-05
 NAME: A
 TIME:

THIS DRAWING MUST BE AT REVISION: 'A'