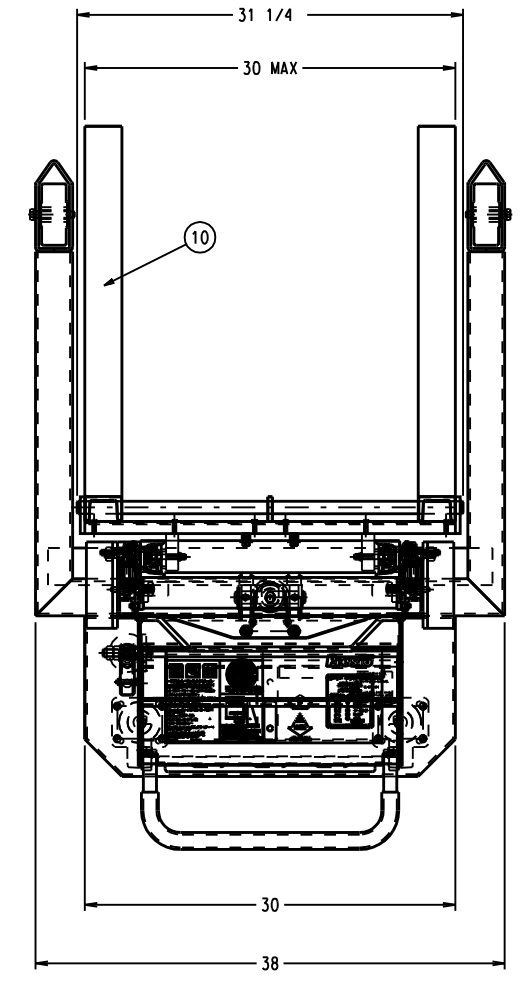
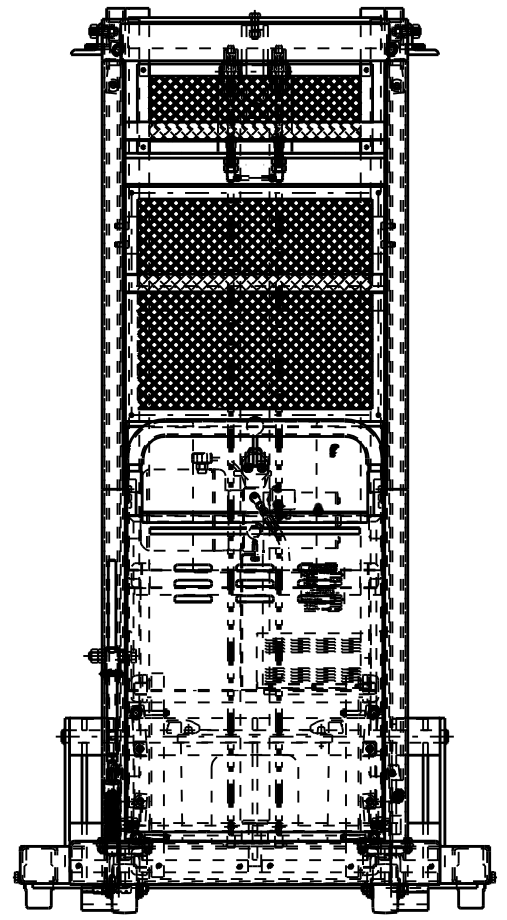
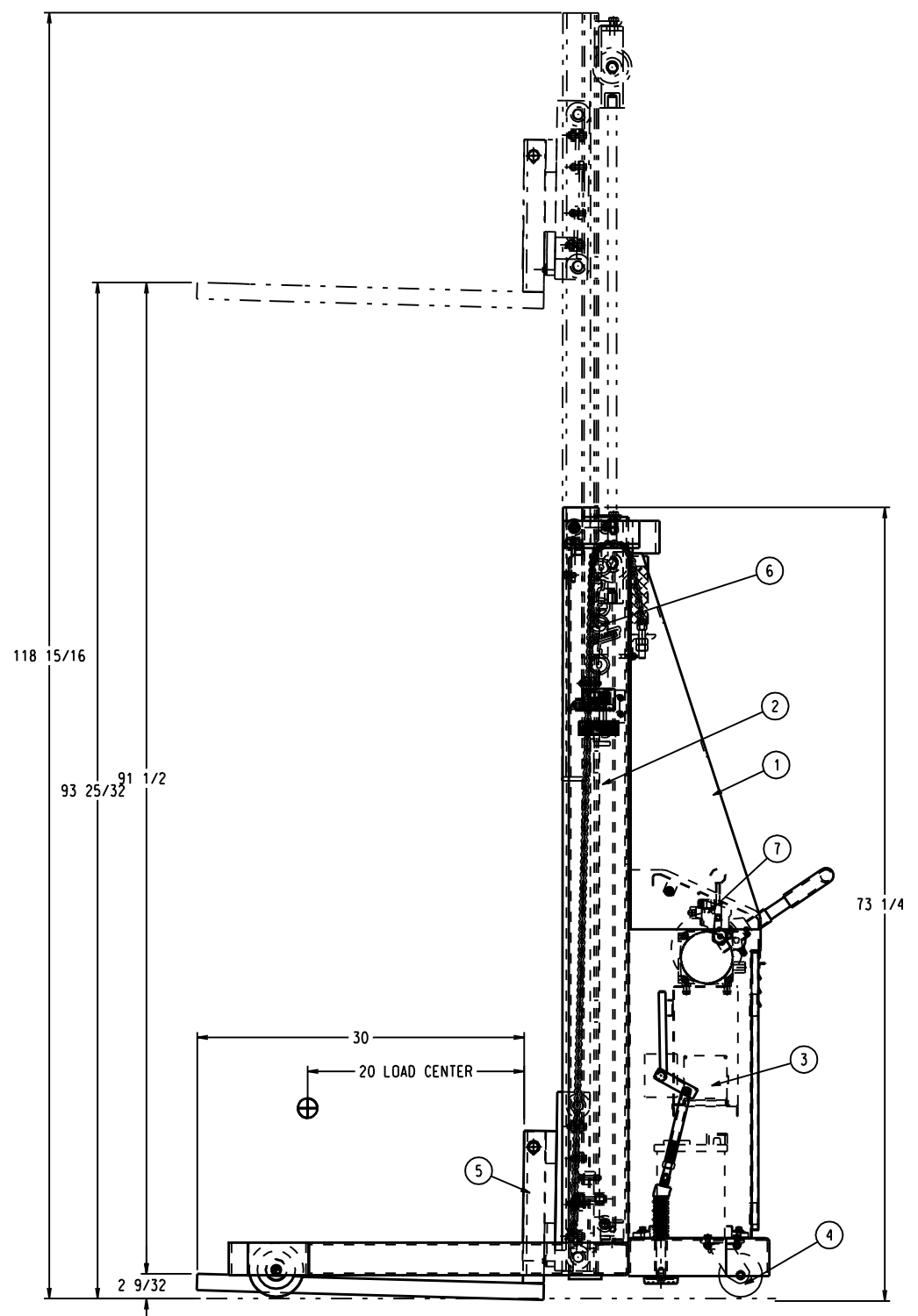


REV	DESCRIPTION	DATE	APPROVED	MF NO.
A	UPDATED BOM	05-19-06	SMS	

GENERAL DESCRIPTION

MODEL: BT894-1500
 CAPACITY: 1500 LBS. @ 20" L.C.
 RISE: 91 1/2 IN @ 18 SEC
 POWER: 12VDC
 CONTROLS: HANDVALVE
 FINISH: PRESTO ORANGE MACHINERY ENAMEL



ITEM	QTY	EA	DESCRIPTION	PART NO.
10	2.0	EA	SA FORK W/M STANDARD BT8 32"LG X 14"H	B 80001854
9		REF	HY PLUMBING SCHEMATIC	A 80001162
8		REF	EL WIRING DIAG 12 DC BTRY	B 80000424
7	1.0	EA	HY PU MONARC	C 80002938
6	1.0	EA	LD KIT LOC DIAG STACKER	C 80001855
5	1.0	EA	TP BACKPLATE & FORK ASS'Y BT800	D 80001853
4	1.0	EA	ACP PORT KIT WP E/B B800	C 80002225
3	1.0	EA	EL ARR B600-1500/2000. WP/WPS. PS	C 80001173
2	1.0	EA	HY ARR I PST294 12VDC	D 80001543
1	1.0	EA	SA FRAME AND CABINET WELDMENT BT894-1500	D 80001848

THIS DRAWING MUST BE AT REVISION: 'A'

<p>3RD ANGLE PROJECTION</p>	FRACTIONS ±1/8 .XXX ±.005 .XX ±.01 ANGLES ±.5° UNLESS OTHERWISE SPECIFIED, DIM ARE IN INCHES	REFERENCE 5001603 SCALE 1/8"	OR DATE 2-21-05 CK RHM DATE 8-03-05 MFC
	USE OF PROPRIETARY INFORMATION LIMITED TO WRITTEN AGREEMENT	BT894-1500 MODEL	TITLE TL BT894-1500 STANDARD BT894-1500 D-DRAWING NUMBER